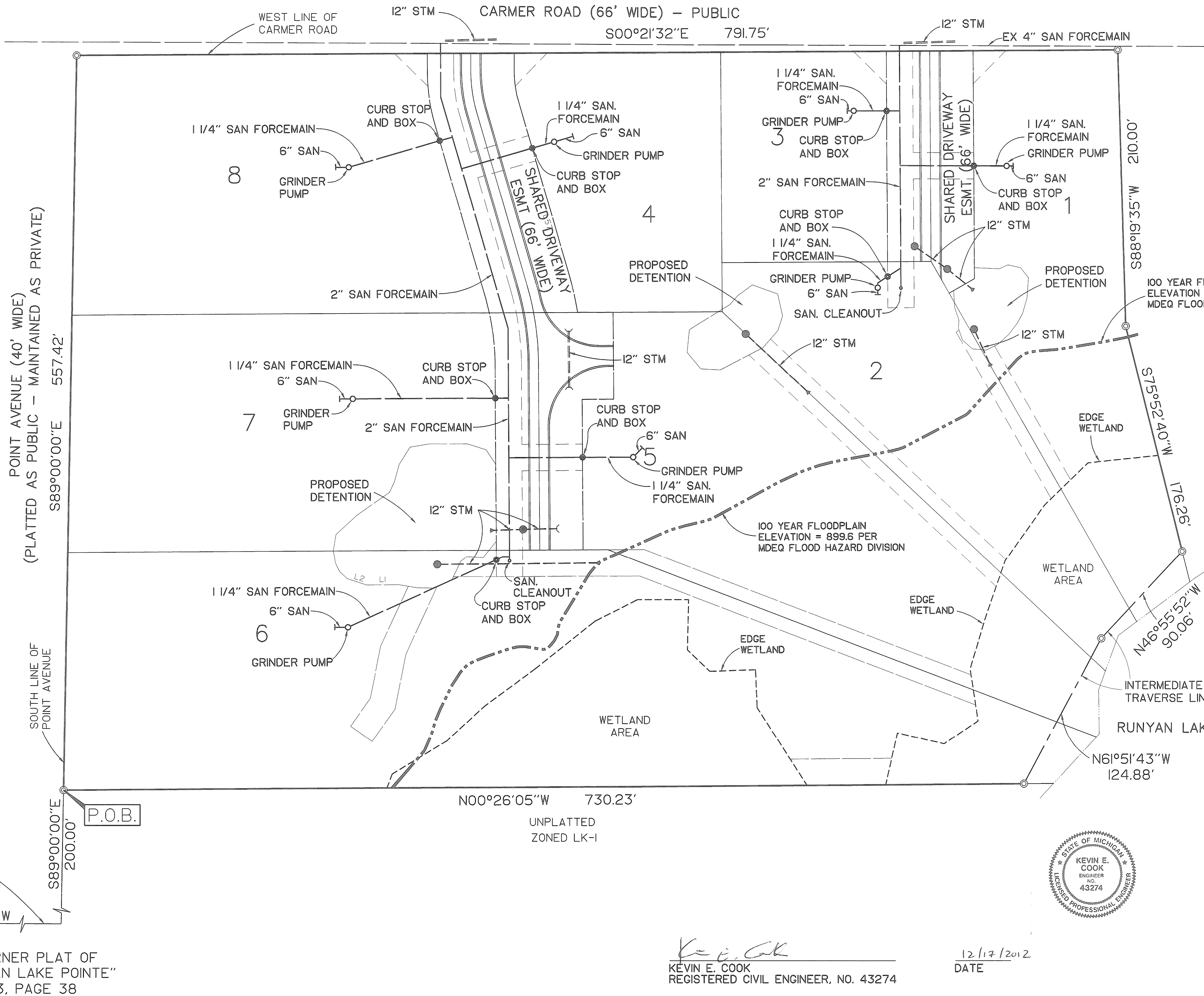


LOCATION MAP
NO SCALE



- NOTES:
1. ELECTRIC, TELEPHONE, GAS, AND TELEVISION LINES, AND OTHER SIMILAR SERVICES AND ALL GAS AND ELECTRIC WILL BE SHOWN ON AS-BUILT DRAWINGS.
 2. ALL LOCATIONS OF PROPOSED STORM AND SANITARY SEWERS WERE OBTAINED FROM RUNYAN LAKE EAST CONDOMINIUM CONSTRUCTION PLANS PREPARED BY CHMP, INC.
 3. ALL UTILITIES SHOWN ON THIS PLAN SERVICING UNITS 1 THRU 8 "MUST BE BUILT".
 4. ALL UNITS SHALL BE SERVICED BY PRIVATE WELLS.

LIVINGSTON COUNTY ROAD COMMISSION
3535 GRAND OAKS DRIVE
HOWELL, MI 48843
(517) 546-4250

LIVINGSTON COUNTY DRAIN COMMISSION
2300 E GRAND RIVER
HOWELL, MI 48843
(517) 546-0040

TYRONE TOWNSHIP
10408 CENTER ROAD
FENTON, MI 48430
(810) 629-8631

CONSUMERS ENERGY
SAL DELISI
3201 E. COURT ST
FLINT, MI 48501
(810) 760-3486

AT&T
ANN THOMPSON
502 BEACH ST RM#402
FLINT, MI 48502
(810) 768-0109

COMCAST CABLEVISION
JOHN KORPI
3008 AIRPORT DR
FLINT, MI 48507
(810) 235-7659

LEGEND

- EXISTING STORM SEWER
- EXISTING SANITARY SEWER
- EXISTING WATERMAIN
- PROPOSED SANITARY SEWER
- PROPOSED STORM SEWER
- PROPOSED WATERMAIN
- EXISTING GAS MAIN
- EXISTING OVERHEAD WIRES
- ⊙ PROPOSED SANITARY MANHOLE
- PROPOSED STORM MANHOLE
- PROPOSED STORM CATCH BASIN
- ▼ PROPOSED STORM SEWER END SECTION



Kevin E. Cook
KEVIN E. COOK
REGISTERED CIVIL ENGINEER, NO. 43274

12/17/2012
DATE

PROPOSED DATE: DECEMBER 17, 2012

DRAWN BY:	J.D.A.	REVISIONS	DATE
CHECKED BY:	G.M.M.		
APPROVED BY:	K.E.C.		
DRAWING NAME:	CONDO		

CHMP INC.
5198 TERRITORIAL RD. GRAND BLANC MI. 48439
CONSULTING ENGINEERS, SURVEYORS, & ARCHITECTS

RUNYAN LAKE EAST CONDOMINIUM
UTILITY PLAN

DATE DRAWN	1-31-08	SCALE	
DATE REVISED		HORIZONTAL:	1"=40'
AS BUILT DATE		VERTICAL:	
JOB NO.	02006000	SHEET	5 OF 5

S:\Archive\2002\02006000 Roy Hicks\CONDO DOC\CONDO.dwg, 12/17/2012 10:45:58 AM